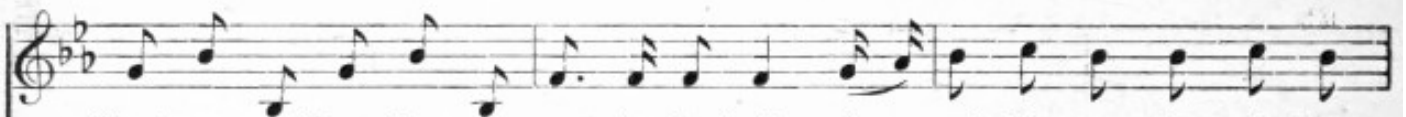
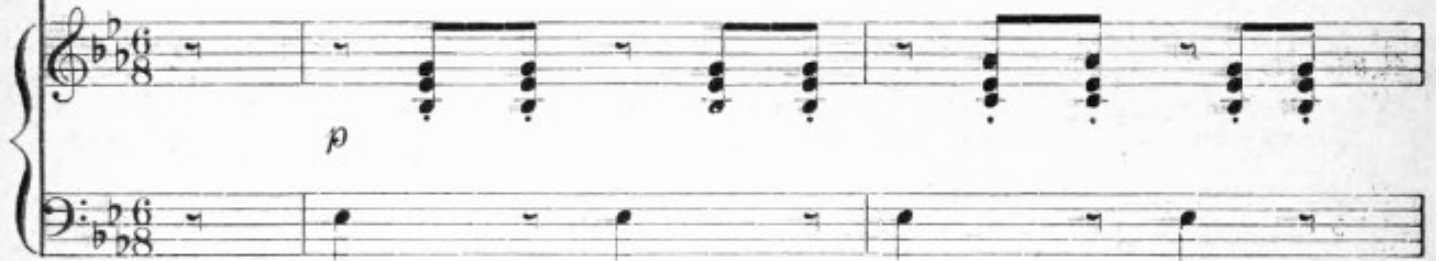


Bonnie Dundee

WALTER SCOTT



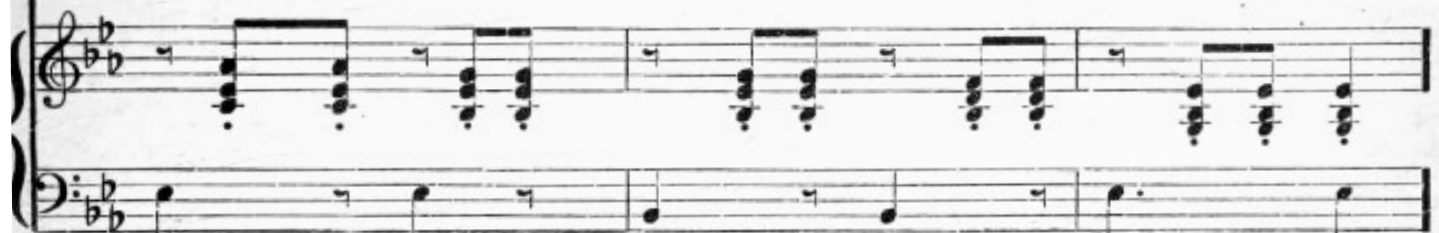
1. To the Lords of Con - ven - tion 'twas Cla - ver - house spoke, "Ere the
2. Dun - dee he is mount - ed, he rides up the street, The
3. There are hills be - yond Pent - land, and lands be - yond Forth, If there's
4. Then a - wa' to the hills, to the lea, to the rocks, Ere I



King's crown go down there are crowns to be broke, So each Ca - va - lier who loves
bells they ring back - ward, the drums they are beat, But the Pro - vost (douce man) said "Just
lords in the south, there are chiefs in the north; There are brave Dinnie was - sels, three
own a u - surp - er I'll crouch wi' the fox; And trem - ble, false Whigs, in the



hon - or and me, Let him fol - low the bon - nets of Bon - nie Dun - dee."
e'en let it be, For the town is weel rid o' that de'il o' Dun - dee,"
thou - sand times three, Will cry "Hey for the bon - nets of Bon - nie Dun - dee."
midst of your glee, Ye hae nae seen the last o' my bon - nets and me.



Come, fill up my cup, come, fill up my can, Come,

mf

This system of the musical score features a vocal line in the treble clef and a piano accompaniment in the grand staff (treble and bass clefs). The key signature is two flats (B-flat and E-flat), and the time signature is common time (C). The lyrics are "Come, fill up my cup, come, fill up my can, Come,". The piano part includes a dynamic marking of *mf* (mezzo-forte) and consists of chords and single notes in both hands.

sad - dle my hors - es, and call out my men, Un - hook the west port and

This system continues the musical score with the lyrics "sad - dle my hors - es, and call out my men, Un - hook the west port and". The notation remains consistent with the first system, showing the vocal line and piano accompaniment in the grand staff.

let us gae free, For it's up with the bon-nets of Bon-nie Dun - dee.

p

This system concludes the musical score with the lyrics "let us gae free, For it's up with the bon-nets of Bon-nie Dun - dee." The piano part includes a dynamic marking of *p* (piano) and ends with a double bar line. The notation continues to show the vocal line and piano accompaniment in the grand staff.