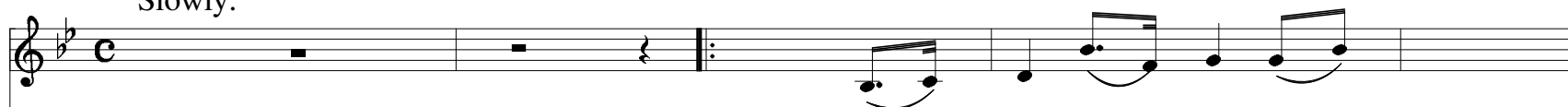
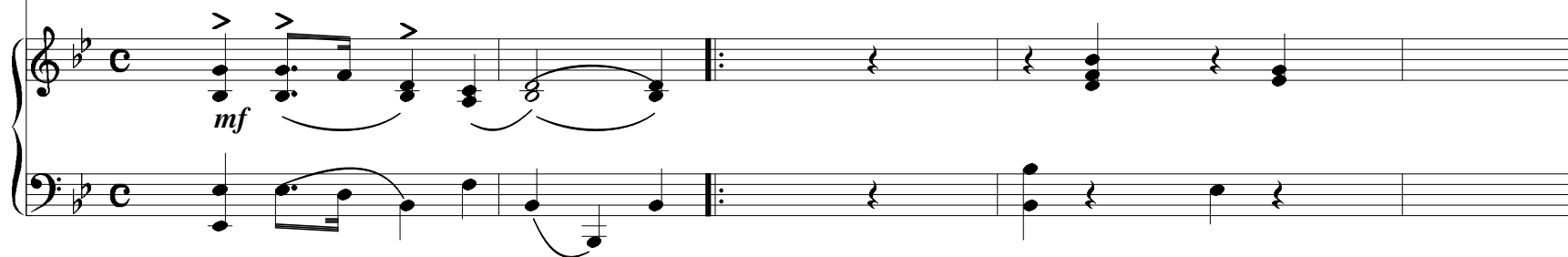


# The Wife of Usher's Well

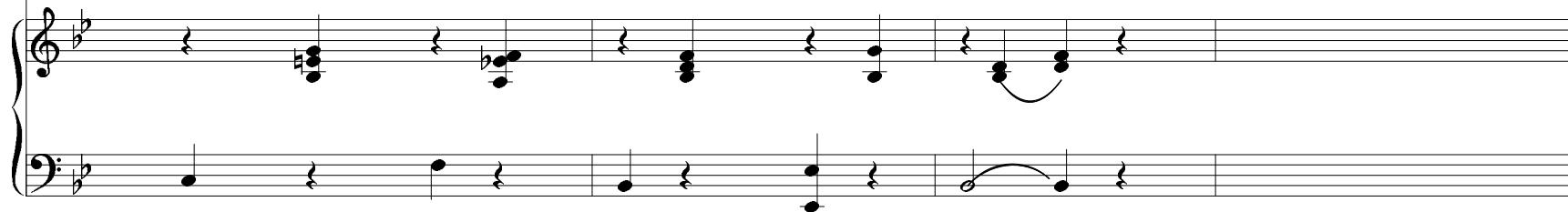
Slowly.



- 1) THERE lived a\_\_\_ wife at\_\_\_
- 2) They\_\_\_ had - na\_\_\_ been a\_\_\_
- 3) It\_\_\_ fell a\_\_\_ - bout the\_\_\_
- 4) Blow\_\_\_ up the\_\_\_ fire my\_\_\_
- 5) Up\_\_\_ then\_\_\_ crew the\_\_\_
- 6) "The\_\_\_ cock doth\_\_\_ crawl, the\_\_\_



- (1) U\_\_\_ - sher's\_ Well and a weal - thy\_\_\_ wife was she, She\_\_\_
- (2) week\_\_\_ from\_\_\_ her, A\_\_\_ week but\_\_\_ bare - ly three, When\_\_\_
- (3) Mar\_\_\_ - tin\_\_\_ - mass, When\_\_\_ nights are\_\_\_ lang and mirk, The\_\_\_
- (4) Mai\_\_\_ - dens\_\_\_ bring, bring\_\_\_ wa - ter\_\_\_ from the well, For\_\_\_
- (5) red,\_\_\_ red\_\_\_ cock, And\_\_\_ up and\_\_\_ crew the gray, The\_\_\_
- (6) day\_\_\_ doth\_\_\_ daw, The\_\_\_ chan - ner - in' worm doth chide; Gin\_\_\_

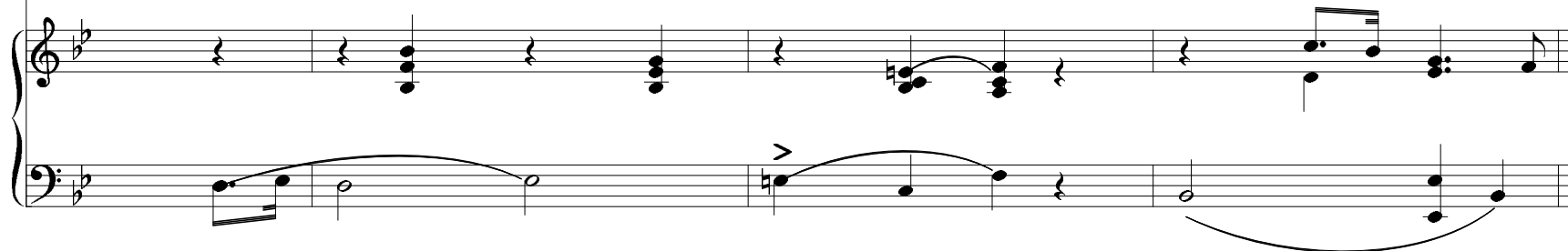




- (1) had three\_\_ stout and\_\_ stal - wart sons\_\_ and\_\_ sent them\_\_ o'er the sea.  
 (2) word came\_\_ to the\_\_ car - line wife\_\_ that her sons she'd\_\_ ne - ver see.  
 (3) car - line\_\_ wife's three\_\_ sons cam' hame\_\_ and their hats were\_\_ o' the birk.  
 (4) a' my\_\_ house shall\_\_ feast this night\_\_, Since\_\_ my three\_\_ sons are well.  
 (5) eld - est\_\_ to the\_\_ young - est said\_\_, " 'Tis\_\_ time we\_\_ were a - way."  
 (6) we be\_\_ missed out\_\_ o' our place\_\_, A\_\_ sair pain\_\_ we maun bide."

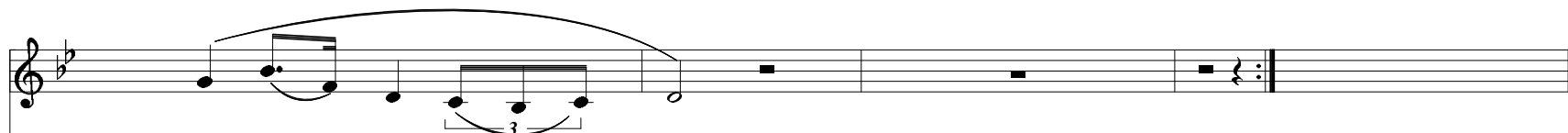
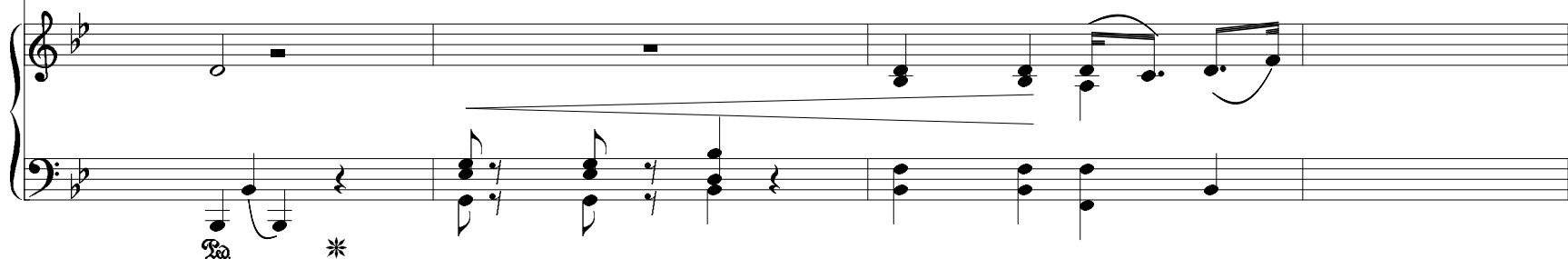


- (1) They\_\_ had - na\_\_ been\_\_ a\_\_ week\_\_ from\_\_ her, A\_\_ week\_\_ but\_\_ bare - ly  
 (2) "I\_\_ wish the\_\_ wind\_\_ may\_\_ nev\_\_ - er\_\_ cease, Nor\_\_ fash\_\_ - es\_\_ in the  
 (3) It\_\_ nei - ther\_\_ grew\_\_ in\_\_ syke\_\_ nor\_\_ ditch, Nor\_\_ yet\_\_ in\_\_ on - ly  
 (4) And\_\_ she has\_\_ made\_\_ to\_\_ them\_\_ a\_\_ bed, She's\_\_ made\_\_ it\_\_ large and  
 (5) The\_\_ cock he\_\_ had\_\_ - na\_\_ craw'd\_\_ but\_\_ ance, And\_\_ clapped\_\_ his\_\_ wings at  
 (6) "Fair\_\_ ye\_\_ weel\_\_ my\_\_ mo\_\_ - ther\_\_ dear! Fare\_\_ weel\_\_ to\_\_ barn and

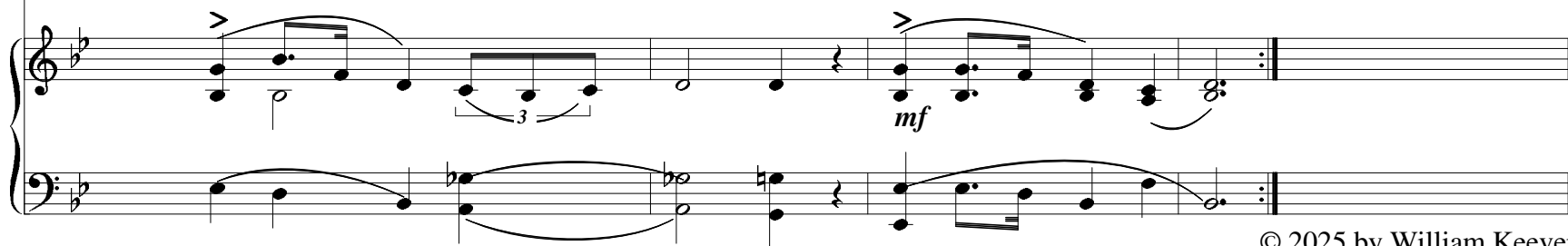




- (1) ane, When\_\_ word\_\_ came\_\_ back to the car\_\_ - line wife\_\_ that\_\_  
 (2) flood, Till\_\_ my\_\_ three\_\_ sons come\_\_ hame\_\_ to me\_\_ In\_\_  
 (3) sheugh; But\_\_ at\_\_ the\_\_ gates o'\_\_ Par\_\_ - a - dise\_\_, That\_\_  
 (4) wide; And\_\_ she's\_\_ ta'en\_\_ her man\_\_ - tle\_\_ her a\_\_ - bout\_\_,  
 (5) a', When the young\_\_ - est\_\_ to the\_\_ eld\_\_ - dest said\_\_ "Broth-\_\_  
 (6) byre! And\_\_ fare-\_\_ ye\_\_ weel, the\_\_ bon-\_\_ nie lass,\_\_ that\_\_



- (1) her three\_\_ sons were\_\_ gane.  
 (2) earth - ly\_\_ flesh and\_\_ blood.  
 (3) birk grew\_\_ fair e\_\_ - neugh.  
 (4) Sat down at the bed\_\_ - side.  
 (5) ther we\_\_ maun a\_\_ - wa'."  
 (6) kind - dles\_\_ my mo\_\_ - ther's fire."



© 2025 by William Keevers

*In keeping with Border ballad practice, syllable placement follows stress and declamation rather than strict note-to-syllable correspondence. Singers may adjust elision and melisma naturally.*